

**Supporting material “Waxcap hyphae colonise plant roots”:
images of *Hygrocybe* ssp. stipe bases, basal mycelium and hyphae**

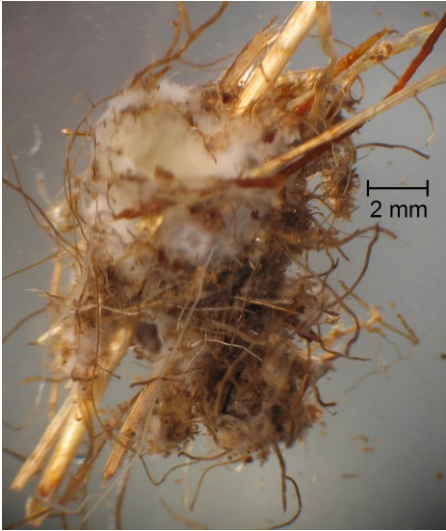


Figure S1: Mucilage of *H. virginea* enveloping comose.

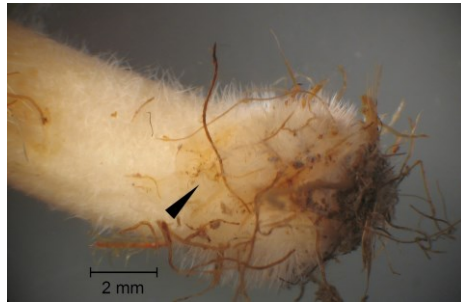


Figure S2: *H. virginea* stipe base showing typical bristle-like trichoids and fine roots attached (arrow).

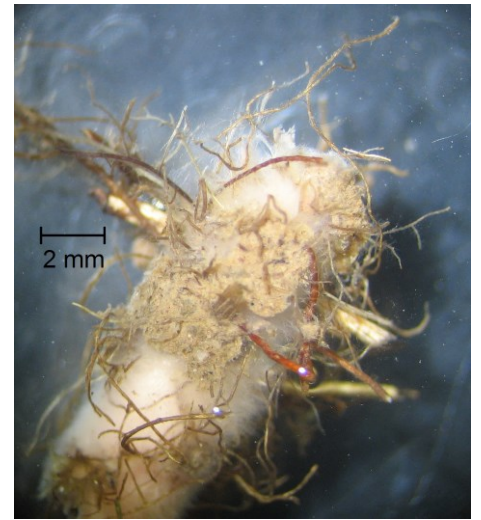


Figure S3: *H. virginea* stipe base with debris and fine roots attached. Note the delicate whitish rootlets which frequently contain hyphae.

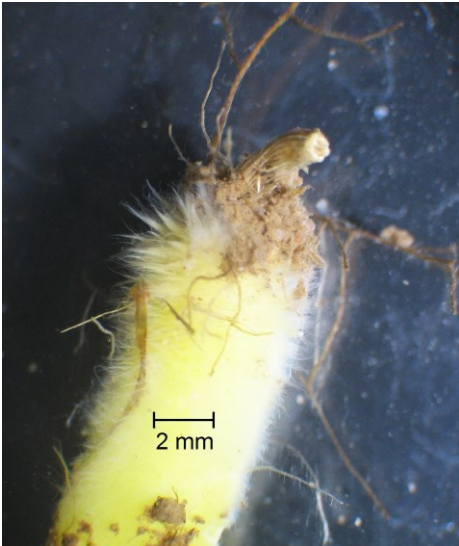


Figure S4: *H. chlorophana* stipe base typical bristle-like trichoids.

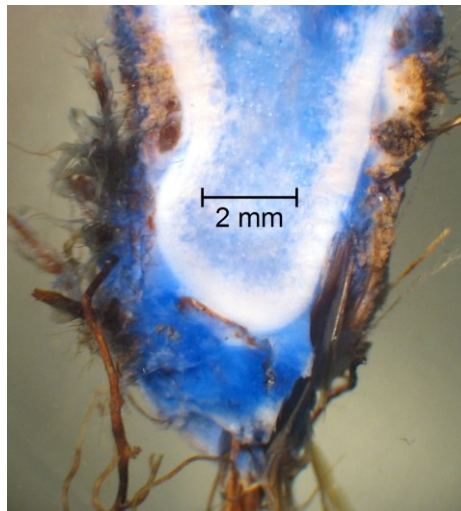


Figure S5: *H. coccinea*, longitudinal section through stipe base showing a massive lump of mucilage around the stipe end, stained with aniline blue.

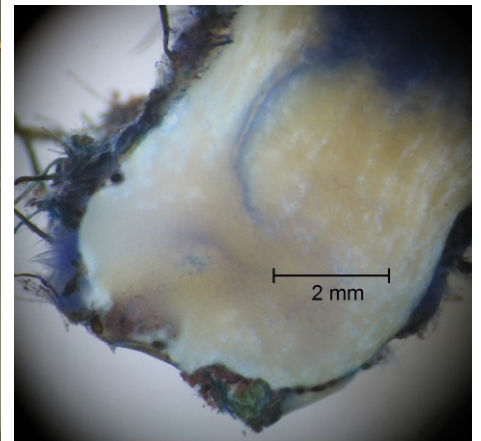


Figure S6: *H. pratensis*, longitudinal section through stipe base with typical trichoids, stained with toluidine blue.



Figure S7: *H. punicea* stipe bases with attached debris and fine roots.



Figure S8: *H. aurantiosplendens* hypha with clamp connection (arrow*) in root hair.

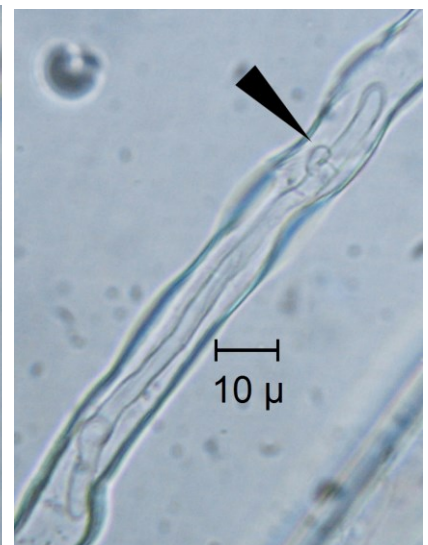


Figure S9: *H. aurantiosplendens* hypha with medallion clamp connection in root hair.

* arrows denote clamp connections in fig S8-32

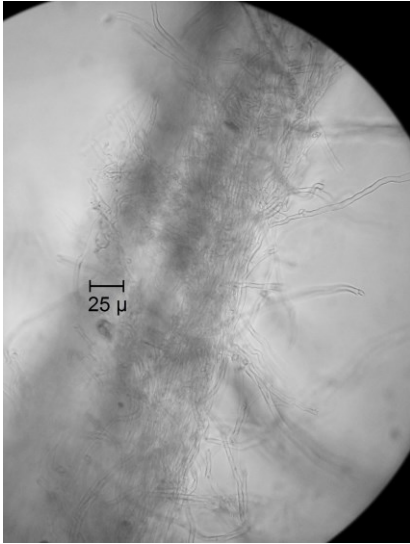


Figure S10: *H. aurantiosplendens*, sheath-like hyphal structure around fine root.



Figure S11: *H. chlorophana*, hypha emerging from a broken fine root with false clamp connection.



Figure S12: *H. chlorophana* hypha with clamp connection in root hair.



Figure S13: *H. chlorophana* hypha with clamp connection in root hair.

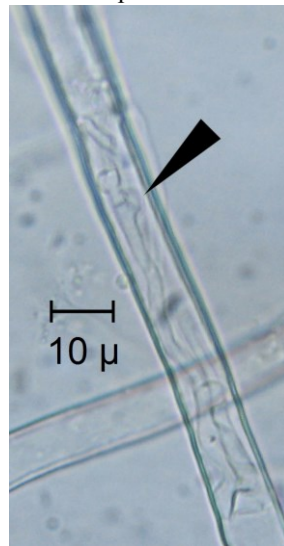


Figure S14: *H. coccinea* hypha with clamp connection in root hair.



Figure S15: *H. pratensis* hypha with clamp connection in root hair.



Figure S16: *H. pratensis* hypha with clamp connection in root hair.

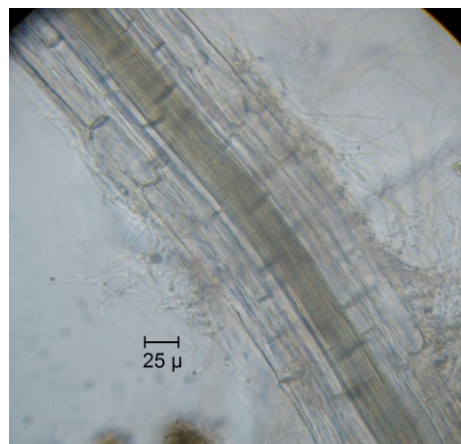


Figure S17: *H. pratensis*, sheath-like hyphal structure around fine root.

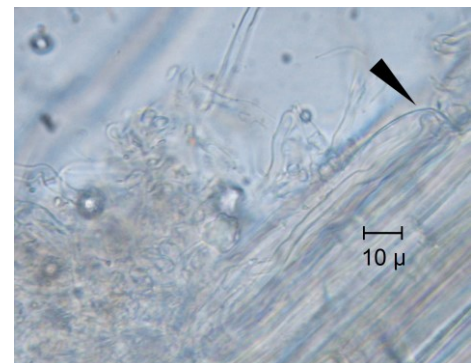


Figure S18: *H. punicea*, hypha with clamp connection in epidermic cell of fine root.

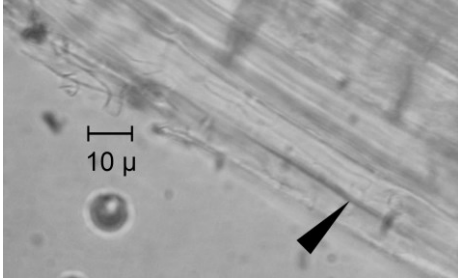


Figure S19: *H. punicea*, hypha with clamp connection in epidermic cell of fine root.

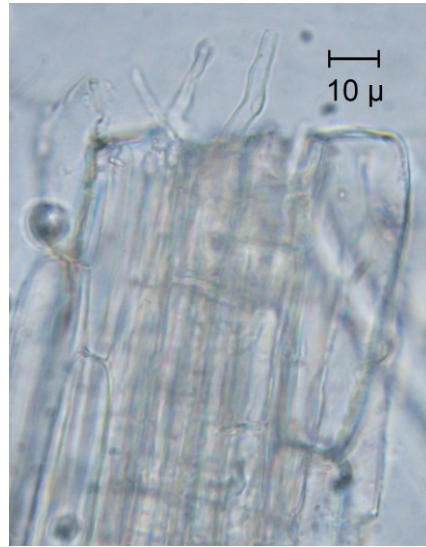


Figure S20: *H. punicea*, hyphae emerging from a broken fine root.

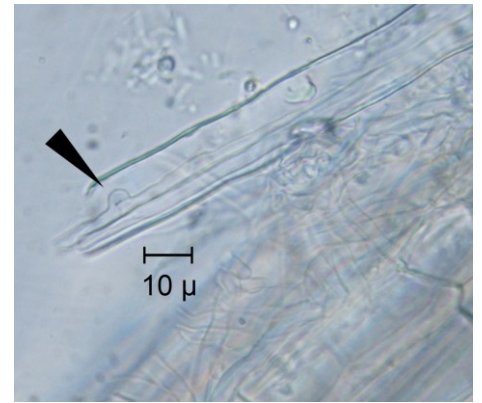


Figure S21: *H. punicea* hypha with clamp connection in root hair.



Figure S22: *H. punicea* hypha with clamp connection in root hair.



Figure S23: *H. splendissima* hypha with clamp connection in root hair.



Figure S24: *H. virginea* hypha with clamp connection in root hair.

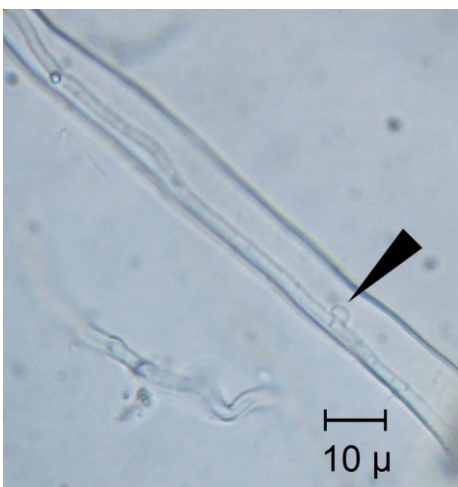


Figure S25: *H. virginea* hypha with clamp connection in root hair.

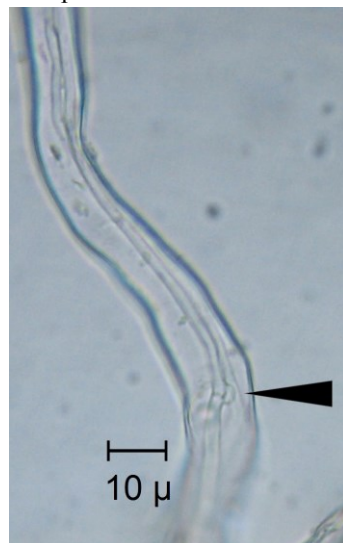


Figure S26: *H. virginea* hypha with clamp connection in root hair.

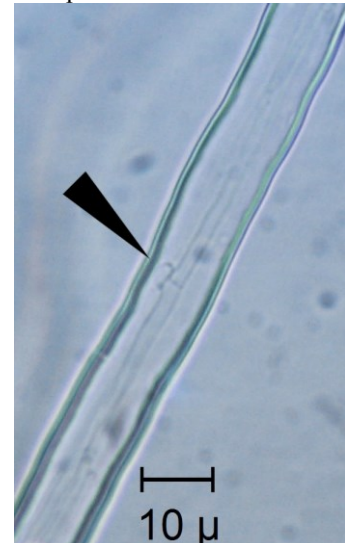


Figure S27: *H. virginea* hypha with clamp connection in root hair.

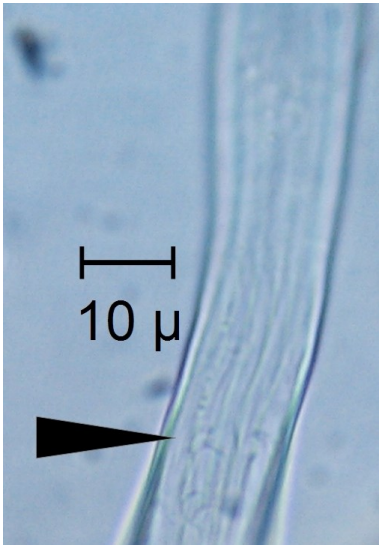


Figure S28: *H. virginea* hyphal bundle with clamp connection in root hair.



Figure S29: *H. virginea* hyphae with clamp connection in epidermic cell of fine root.



Figure S30: *H. virginea* hyphae with clamp connection in epidermic cell and root hair of fine root.

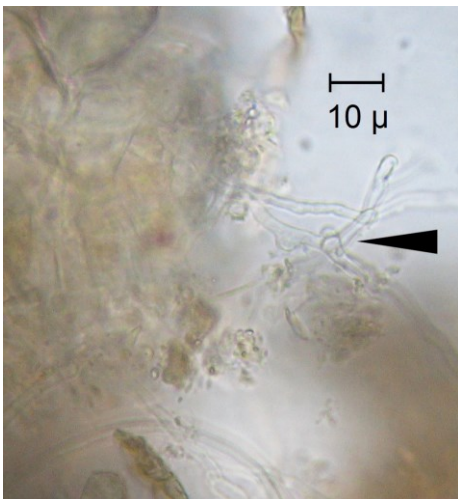


Figure S31: *H. virginea*, hyphae with clamp connection emerging from a broken fine root.

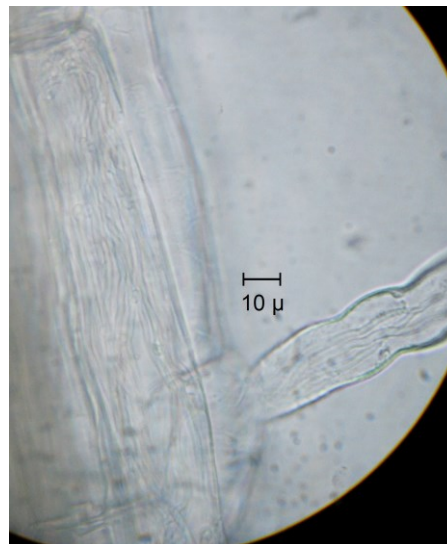


Figure S32: *H. virginea* hyphal bundle crammed in root hair.

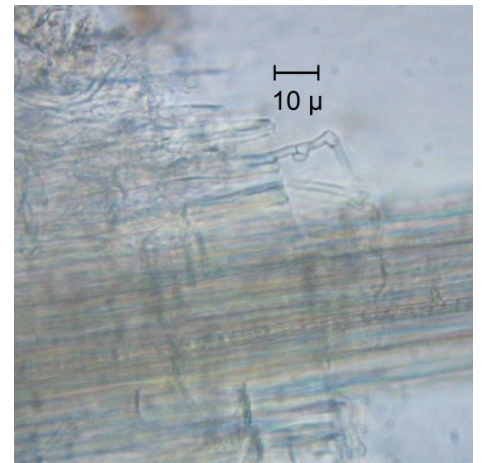


Figure S33: *H. virginea*, hyphae with clamp connection emerging from a broken fine root.

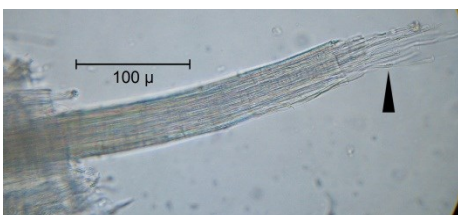


Figure S34: *H. virginea*, hyphae with clamp connection emerging from a broken fine root pith.

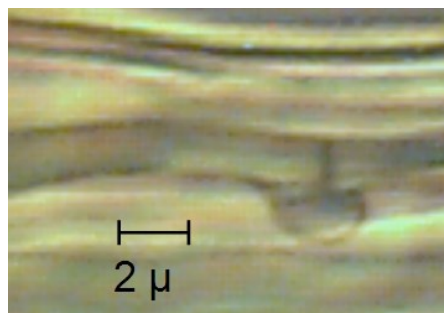


Figure S35: *H. virginea* clamp within root hair, phase contrast

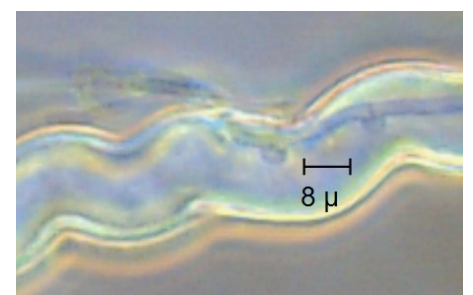


Figure S36: *H. virginea*, clamps within root hair, hypha exiting to the upper left; phase contrast